



AP
ESR
2108

8-Port 10/100Mbps Reverse PoE Switch

- With 6 reverse incoming PoE ports, the 7th and 8th port is PoE output.
- Working with 24V passive PoE compliant PSE, expands FTTX network.
- Support Port VLAN and Requires no configuration and installation.
- Output power supply 24V via Uplink port and 5v/12v/ via DC port.



OVERVIEW

AP-ESR-2108 is an 8 10/100Mbps ports unmanaged reverse poe switch that requires no configuration and provides 6 incoming PoE (Power over Ethernet) ports. It can automatically detect and accept power with 24V Passive PoE compliant Powered Supply Equipment (PSE). In this situation, the electrical power is transmitted along with data in one single cable allowing you to expand your network to where there are no power lines or outlets, this product suit for your FTTX solution and solve the power supply of your ONU equipment in your building corridor.

KEY FEATURES

- With 6 reverse incoming PoE ports, the 7th and 8th port is PoE output.
- Working with 24V passive PoE compliant PSE, expands FTTX network.
- Support Port VLAN and Requires no configuration and installation.
- Output power supply 24V via Uplink port and 5v/12v/ via DC port.

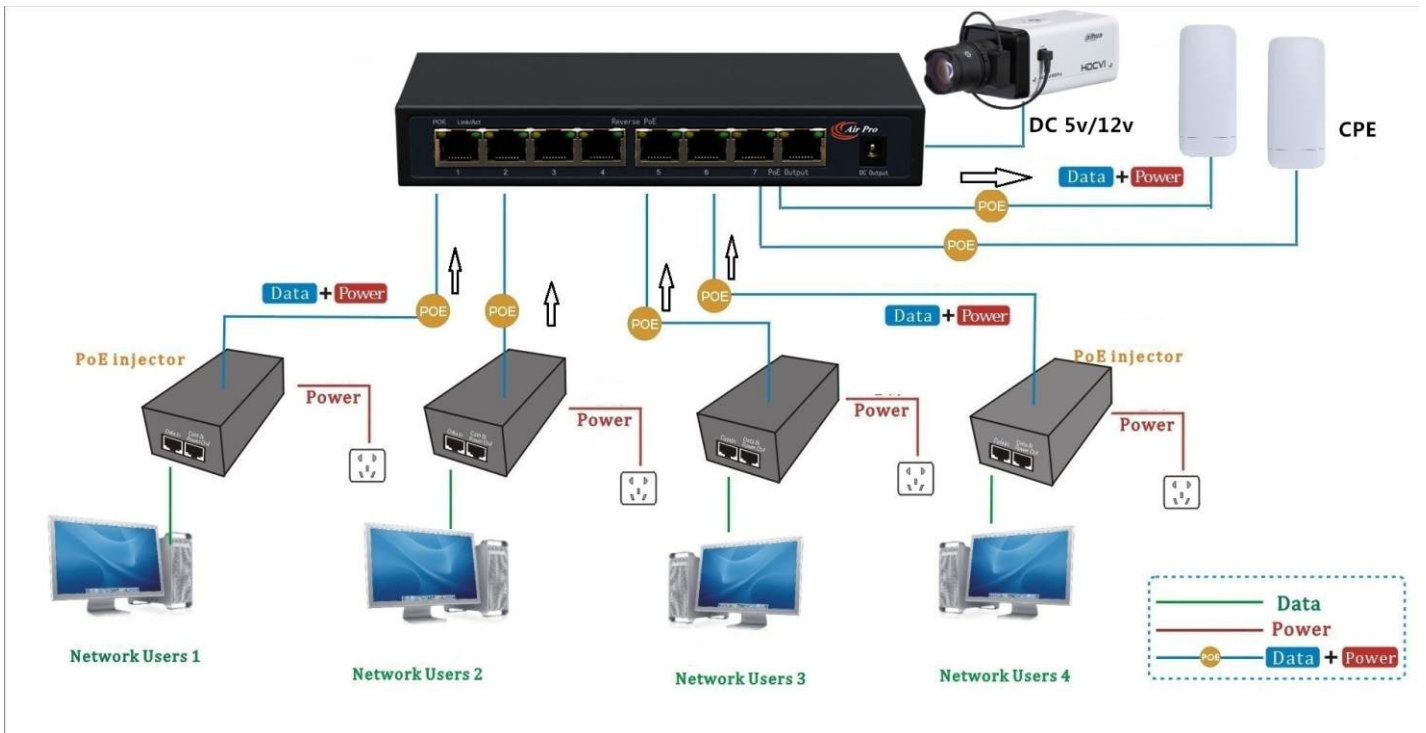
PRODUCT SPECIFICATIONS

Hardware	
Interface	8 10/100Mbps RJ45 Ports AUTO Negotiation/AUTO MDI/MDIX
Network Media	10BASE-T: UTP category 3, 4, 5 cable (maximum 100m) EIA/TIA-568 100Ω STP (maximum 100m) 100BASE-TX: UTP category 5, 5e cable (maximum 100m) EIA/TIA-568 100Ω STP (maximum 100m)
PoE Ports (Rj45)	PoE IN Ports: Port1- Port6, PoE out Port: Port7-8
PoE Pin definition	4/5 (+), 7/8 (-)
Backbound Bandwidth	1.6Gbps
Power Supply Output	DC 5V/12V, PoE 24V
Fan Quantity	Fanless
Dimensions (L xW x H)	95mm*63mm*28mm

Software	
Transfer Method	Store and Forward
MAC Address Table	2K
Advanced Functions	Compatible With 24V passive PoE Compliant PSE Priority Function Mac Address Auto-Learning And Auto-Aging IEEE802.3x Flow Control For Full-Duplex Mode And Backpressure For Half-Duplex Mode

Others	
Certification	CE
Environment	Operating Temperature: 0°C~40°C (32°F~104°F) Storage Temperature: -40°C~70°C (-40°F~158°F) Operating Humidity: 10%~90% non-condensing Storage Humidity: 5%~90% non-condensing
Package	8-Port 10/100Mbps Desktop Switch with 6-Port PoE User Guide
System Requirements	Microsoft® Windows 8,Windows 7,98SE, NT, 2000, XP, Vista™, MAC® OS, NetWare®, UNIX® or Linux.

Connection Diagram



www.airpro.in